

SE135

SHANTUI
VALUE THAT WORKS

EXCAVATOR
SERIES

Engine Model	Cummins QSF3.8T
Gross Power	86 kW/2200 rpm
Operating Weight	13500 kg

LET'S MAKE
CONSTRUCTION EASIER



SHANTUI CONSTRUCTION MACHINERY CO., LTD.
ADDRESS: No. 58, G327 Highway Jining City, Shandong, CHINA
TEL: +86-537-2909369 FAX: +86-537-2311219
EMAIL: trade@shantui.com WEB: www.shantui.com



www.shantui.com

SE135 TECHNICAL PARAMETERS EXCAVATOR SERIES

SHANTUI
VALUE THAT WORKS

ENGINE

Model	Cummins QSF3.8T
Type	Water cooled, direct injection, turbocharged
No. of cylinder	4
Emission Regulation	Tier 3 / Stage III
Displacement	3.76L
Power output	86kW/2200rpm

HYDRAULIC SYSTEM

Type	Variable double-piston pump
Max. discharge flow	2×130L/min

DIGGING FORCE (ISO6015)

Bucket digging force	97kN
Arm digging force	70kN

BUCKET

Type	Backhoe bucket
Bucket capacity	0.45~0.63 (0.6) m ³
Bucket width	1039mm

TRAVEL SYSTEM

Type	Axial variable plunger motor
Support roller quantities	2X7
Carrier roller quantities	2X1
Travel shoes	2X44
Travel speed	3.25/5.2 km/h
Drawbar pulling force	135kN
Grade ability	70% (35°)

SWING SYSTEM

Swing motor type	Axial piston motor
Swing speed	0~11.3r/min
Brake type	Pressure release, mechanical braking

REFILLING CAPACITIES & LUBRICATIONS

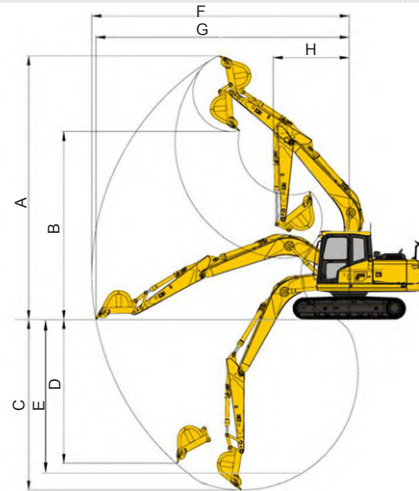
Fuel tank	245L
Cooling system	20L
Engine oil	12L
Hydraulic oil tank	177L
System Capacity	205L

OPERATING WEIGHT AND GROUND PRESSURE

Shoe width	500mm
Ground pressure	41.5kPa
Operating weight	13500kg

SCOPE OF WORK (mm) (Boom: 4600 mm Arm: 2500 mm)

A	Max. digging height	8495
B	Max. dumping height	6060
C	Max. digging depth	5490
D	Max. vertical digging depth	4625
E	Max. Depth cut for 2500mm Level Bottom	5270
F	Max. digging distance	8300
G	Max. digging radius at ground level	8175
H	Min. swing radius of work equipment	2445



DIMENSIONS (mm)

A	Overall length	7860
B	Ground contact length (Transportation)	4320
C	Overall height(to top of boom)	2800
D	Overall width	2500
E	Overall height(to top of cab)	2855
F	Counter weight ground clearance	915
G	Ground clearance	425
H	Tail swing radius	2380
I	Tread	2925
J	Track length	3645
K	Track gauge	2000
L	Track width	2500
M	Shoe width	500
O	Bonnet height	2120
P	Revolving frame width	2490
Q	Distance from swivel center to tail	2375

