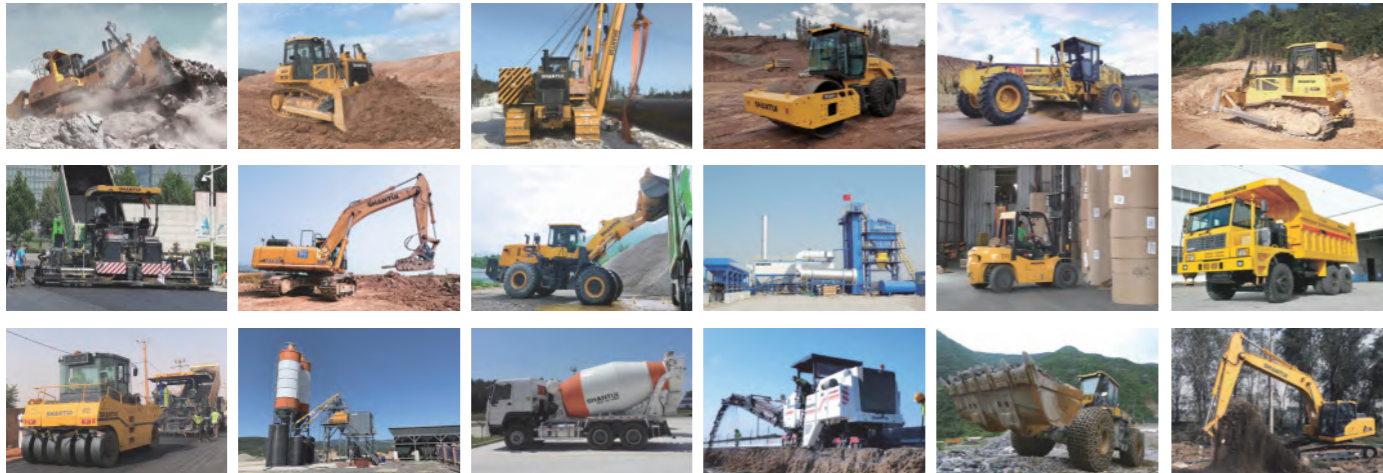


LET'S MAKE CONSTRUCTION EASIER

GROUP PRODUCTS



SHANTUI

L55-B5
Wheel Loader



Shantui Social

SHANTUI CONSTRUCTION MACHINERY CO., LTD.
ADD: No. 58, G327 Highway, Jining City, Shandong, CHINA
TEL: +86-537-2909369
FAX: +86-537-2311219
EMAIL: trade@shantui.com
WEB: www.shantui.com

SHANTUI
LET'S MAKE CONSTRUCTION EASIER

Engine Model: CUMMINS 6CTA8.3-C215
Gross Power: 160kW@2200rpm
Operating Weight: 16,400kg
Bucket Capacity: 3m³

New Appearance
better performance

WALK-AROUND

LOADED WITH VERSATILITY

- Standard 3.0m³ GP bucket.
- Optional: heavy duty bucket or light material bucket.
- Optional: coupler, side-dump bucket, forks, snow blade or wood clamp.

RELIABLE STRUCTURE PARTS

- The front and rear frames with reinforced structure, high strength and long service life; the wheelbase up to 3250mm, moving with load more stable.
- CAE analysis of structural parts; high-efficiency Z-bar linkage system; fast movement, large digging force.



SHANTUI HEAVY DUTY AXLE

- Four-planetary gear structure axle guarantees high load capacity and low failure rate.
- Oscillated rear axle provides reliable four-wheel drive, lowers the gravity, assures high safety and comfort.

NEW CAB

- Streamlined design, attractive appearance.
- A spacious, safe, quiet operator environment featuring ergonomic controls.
- Optional with Climate control system.



SHIG GOLDEN POWERTRAIN

- Cummins engine
- More powerful & reliable, fuel economy.
- Desert filter element features simple maintenances and low cost.



SHANTUI TRANSMISSION

- SHANTUI self-made speed increase transmission and torque convertor.
- Perfect match the engine, nice acceleration performance.
- Large traction and lifting force, strong explosive force and high efficiency.



COMFORT



ERGONOMICAL DESIGN

L55-B5 is designed to offer maximum visibility for safe and efficient operation. A panoramic view is made possible by the cab's curved front glass. The spacious cab maximizes the operating space and provides a comfortable work area for the operator.



Exceptional all-around visibility reduces strain and fatigue, making operators more productive.



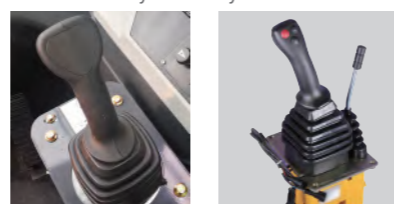
Repositioned vents throughout the cab keep fresh air flowing while improving the cab's heating, cooling.



The vertically and horizontally adjustable suspension seat ensures the operator can work long days in comfort and with less fatigue.



Real-time Operation information easy to read; Information failure self-diagnostic and alarm, ensure efficiency and safety.



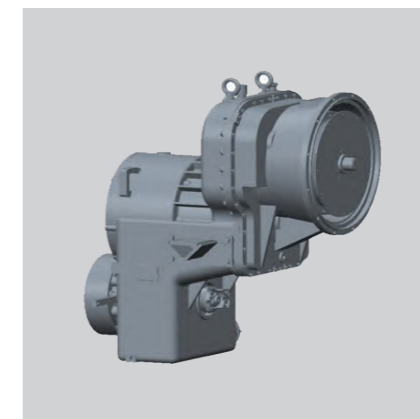
The pilot control features accurate and handy operations. Customer can also select more movements to attachment with the help of 3rd function valve.

RELIABILITY

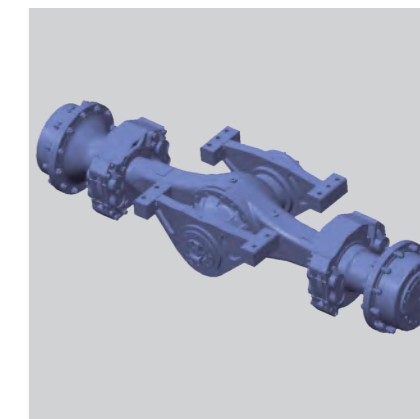
POWER TRAIN: POWERFUL EFFICIENCY



The Cummins engine delivers, at the rated speed of 2200 rpm, the net power of 160 kW, and meets Tier II emission standard, features low speed and low fuel consumption.



The SHANTUI unique design of high capacity torque converter ensures the maximum utilization of engine power. The drive shaft flanges are of DIN and SAE specifications and the distribution diameter of the fastening bolts is enlarged to realize super-strong torsion resistance and adapt to high strength and heavy-load continuous operations.

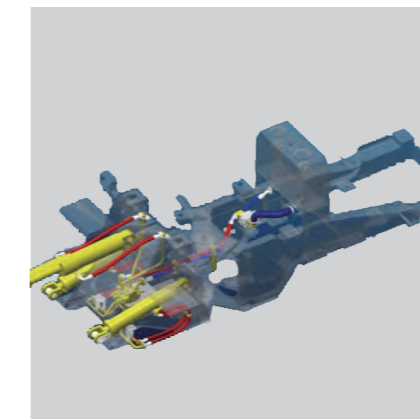


The SHANTUI axles are designed to handle extreme applications resulting in reliable performance and durable life. The rear axle can oscillate to ± 12 degrees helping to ensure all four wheels stay on the ground providing stability even in the roughest terrain, for excellent stability and traction.

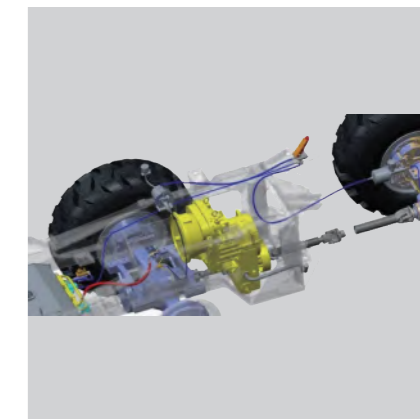
HYDRAULICS: WELL BALANCED, TESTED AND PROVEN



Load sensing steering maximizes machine performance by directing power through the steering system only when needed. When the machine is not steering, more engine power is available to generate rimpull, breakout and lift forces. Load sensing reduces horsepower draw by up to 8 percent, resulting in better fuel economy. Large-bore steering cylinders allow responsive maneuverability.



High efficiency and reliable hydraulic pumps. High flow rates result in fast hydraulics, for an optimum balance between machine ground speed and hydraulic lift speed, especially important in tight truck loading.



The air outlet pipe of the air compressor is lengthened and arranged from up to down, which fully condenses the high-temperature gas and is discharged by the low-level oil-water separation valve to avoid the blockage of the gas path caused by freezing in winter; The air reservoir drain valve is remotely operated by flexible shaft.

SERVICEABILITY & WORK TOOLS

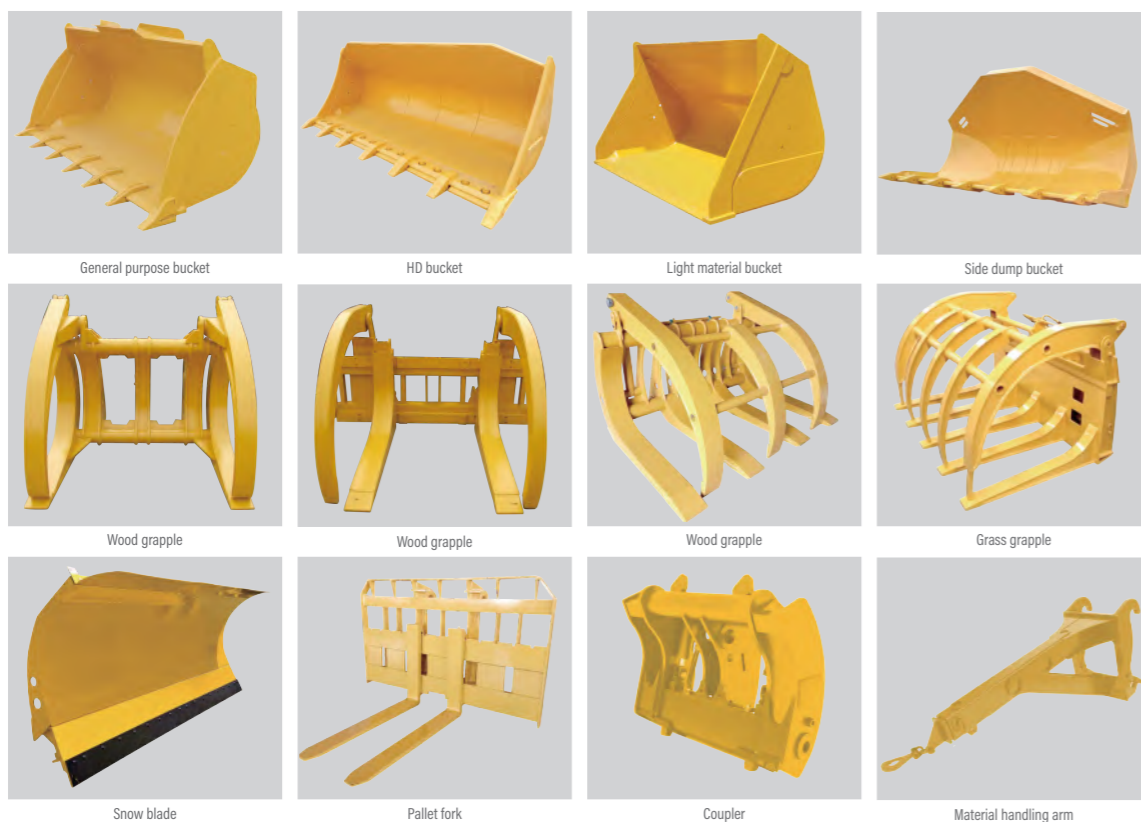
WIDE OPEN ACCESSIBLE MAINTENANCE

The L55 machine design is not only concern about operators' comfort, it also offers convenience on the daily maintenance. Wide open maintenance access for engine, hydraulics and electrical A/C systems. Centralized hydraulic pressure testing location. All daily maintenance can be performed efficiently at ground level.



WORK TOOLS

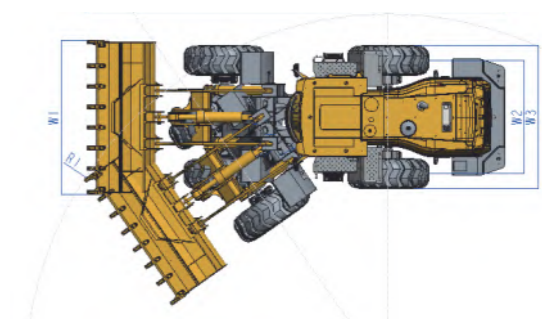
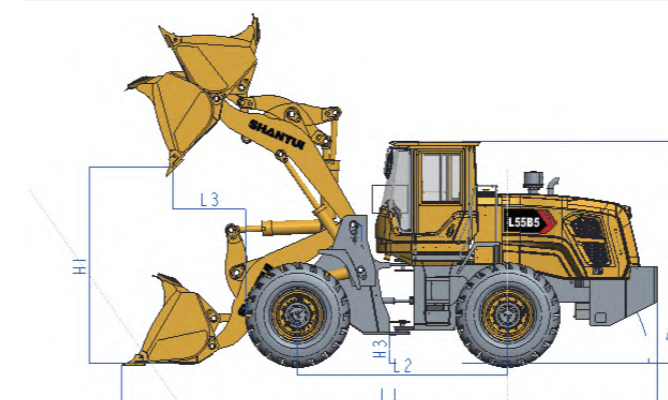
A variety of pin-on and coupler attachments are available for SHANTUI L55. SHANTUI Work Tools are durable, reliable and designed for performance and efficiency. The integrated design of the system creates a perfect match to achieve superior productivity.



SPECIFICATIONS

ENGINE	
Emission	Tier 2 / Stage II
Model	Cummins 6CTA8.3-C215
Rated Power	160kW @ 2,200 rpm
Max Torque	900 N · m
Displacement	8.3 L
Number of Cylinders	6
LOADER ARM PERFORMANCE	
Tipping Load - Full Turn	10000 kg
Bucket Breakout Force	170 kN
Maximum Dump Angle at Full Height	45°
Dump Clearance at Full Height Discharge	3044 mm
Dump Reach at Full Height Discharge	1114 mm
Maximum Hinge Pin Height	4186 mm
Maximum Digging Depth, Bucket Level	40 mm
Bucket Capacity	3 m ³
Operating Weight	16400kg
TRANSMISSION	
Transmission Type	Planetary, power shift
Torque Converter	Single stage, four elements
Maximum Travel Speed, fwd	40 km/h
Maximum Travel Speed, rev	15 km/h
Number of Speeds, fwd	2
Number of Speeds, rev	1
AXLES	
Differential Front Type	Conventional
Differential Rear Type	Conventional
Axle Oscillation	±12°
STEERING	
Steering Configuration	Articulated
Steering System Pressure	16 Mpa

BRAKES	
Service Brake Type	Caliper disc brake
Service Brake Actuation	Air over Hydraulic
Parking Brake Type	Flexible shaft control
Parking Brake Actuation	Mechanical
TIRES	
Tire Size	23.5-25 L3
HYDRAULIC SYSTEM	
Main Pump Type	Gear
Main Relief Pressure	18 Mpa
Raise time	5.5 S
Total Cycle Time	10.5 S
SERVICE CAPACITY	
Fuel Tank	300 L
Hydraulic oil Tank	170 L
Engine Oil	21 L
Axles, each	29X2 L
Transmission	45 L
Cooling System	23 kg
DIMENSIONS	
Length	8220 mm
Width	3066 mm
Height	3540 mm
Wheelbase	3250 mm
Wheel Tread	2238 mm
Ground Clearance	440 mm
Turn Angle, Either Side	35°
Turning Radius, Outside of Tire	6626 mm
Turning Radius, Center of Tire	6326 mm
Turning Radius, Bucket Carry	7219 mm



* The specifications are subject to change without notice. The pictures may include options. The actual color & appearance of the product may differ from what is shown.