



TRUCK
MIXERS





TRUCK
MIXERS



BATCHING PLANT SOLUTIONS



Over 50 years of entrepreneurial history have taught us that only a close interaction between the customer's experience and productive and design-related dynamicity can generate quality products capable of fully satisfying market demands.

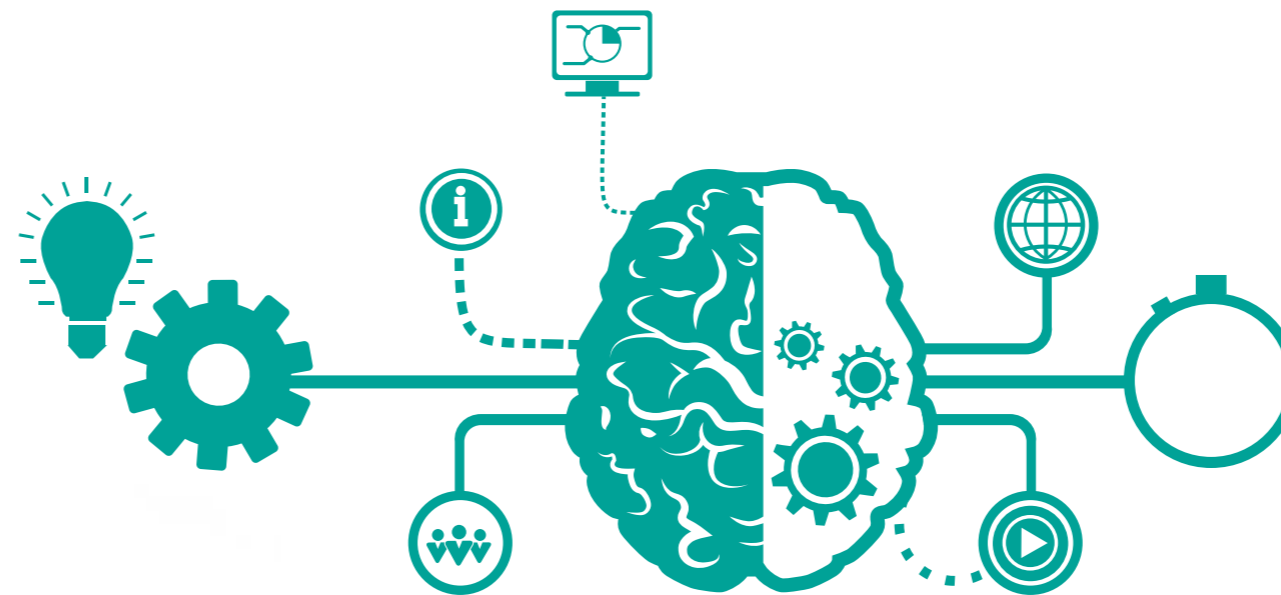
The outstanding know-how of our staff guarantees the success of every company process, from design to aftersales service. This makes us a reliable partner for the development of batching plant solutions, before, during and after purchase.

OUR COMMITMENT

OUR MISSION & VALUES

Passion for quality, transparency and ethics, considered as the complete respect for working dignity, people and the environment, are the values that guide our actions.

From the design phase, every single one of our products is conceived for maximum usability and the minimum environmental impact. We like to think of a better world, doing our work to the best of our ability.



Our solutions:



Are developed through the commitment to raise the standards of efficiency, safety and environmental respect to the highest level.



Are born after "listening" carefully to the needs of our customers.



Draw strength from the fact that we belong to a big Industrial Group.

PRODUCTS

DESIGN, QUALITY, SERVICE AND RESPECT FOR THE ENVIRONMENT: THE OUTCOME OF OUR ACTIONS

IMER GROUP TRUCK MIXERS

The IMER Group Concrete Machinery Division, Le Officine Riunite Udine S.p.A., dedicated to the production of plants and equipment for the production, transport and distribution of concrete, is synonymous with a complete customer service: design, tailored to the requirements of individual building yards thanks to the efficient and flexible organization of the engineering department, manufacture, and sale and after-sale service.

The service department makes it possible to promptly meet the different requirements of individual customers.



The rigidly selected staff, its constant dedication to quality, the continuous technological innovations and the application of rigid controls have enabled the company to reach high levels of performance in terms of reliability and innovation.

In confirmation of its constant care of environmental demands and ecological respect, all the plants, truck mixers and equipment are designed and constructed in order to limit the noise and the dust emission.



**IDEAL MACHINES FOR CONCRETE
TRANSPORTATION AND DELIVERY**

TRANSPORT IS AN ESSENTIAL
STAGE TO MAINTAIN THE QUALITY
OF READY MIX CONCRETE

Our machinery for concrete transportation and pouring are capable of preserving the properties of concrete during the transfer phase from the concrete mixing plant to the worksite. Our truck mixer, mixer pumps and conveyor belts are the result of consolidated know-how mastered during more than three

decades of activity on markets worldwide. Our skills in outfitting vehicles of all brands allow to achieve optimal performance levels while ensuring safety on the road and at the worksite. All the mixers are available in "H" version driven by PTO of the chassis and on request, in "D" version driven by auxiliary

engine. Thanks to the use of special wear-resistant steel, our mixers are also available in "H SL" version (lightweight).

SPECIAL STEELS

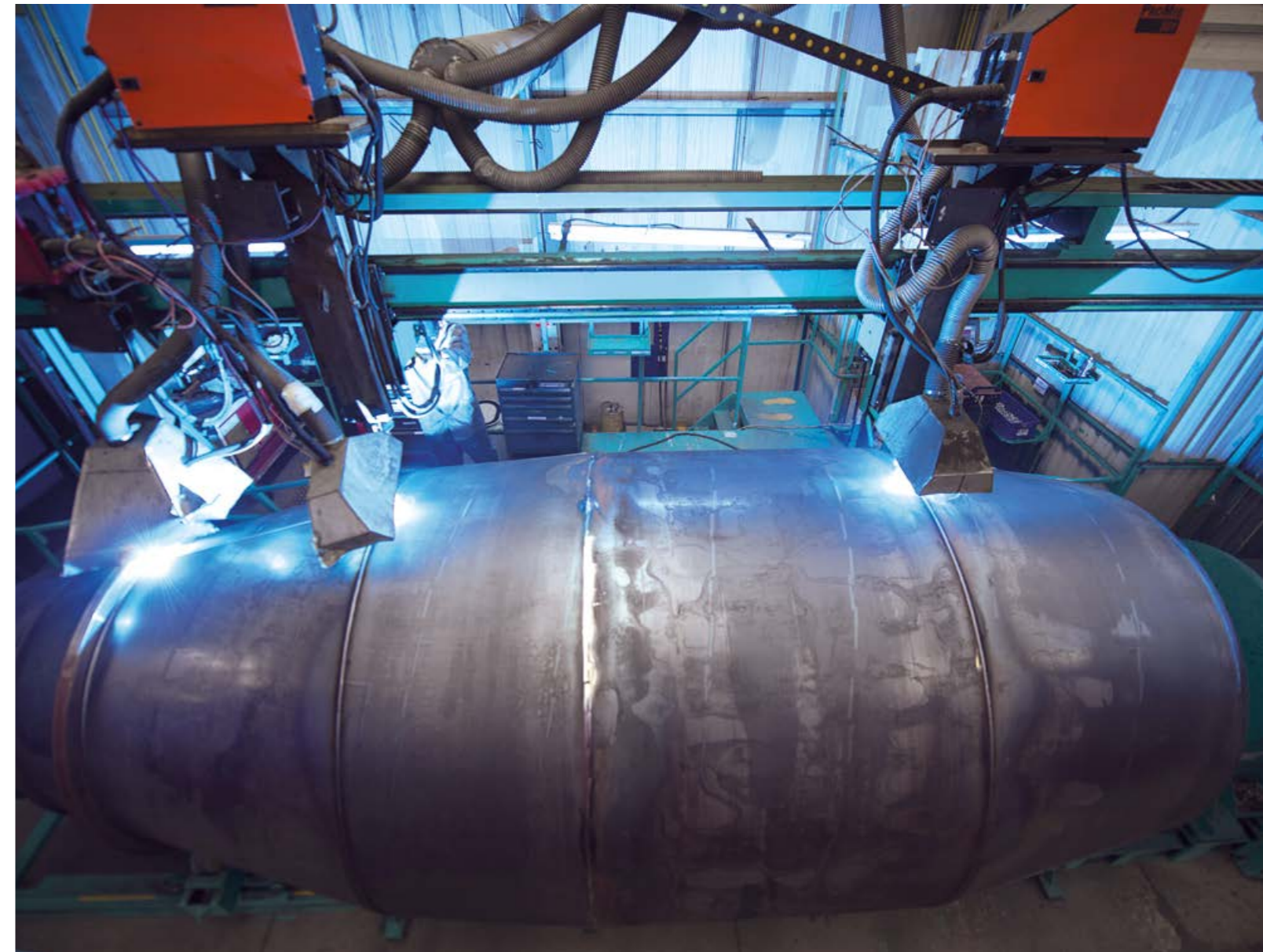
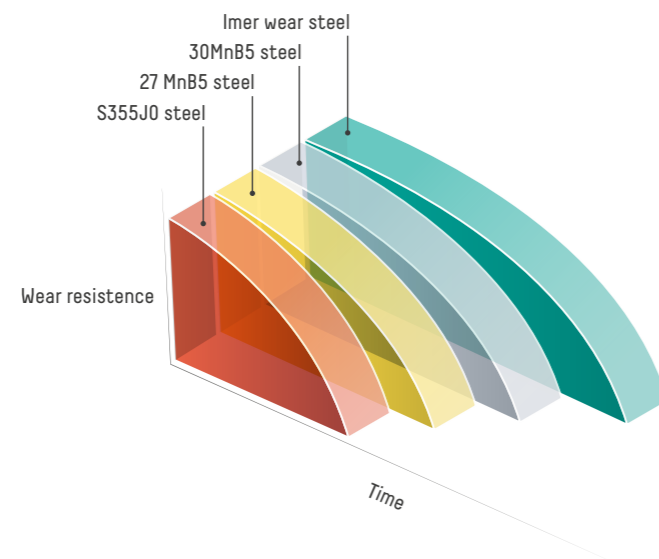
THE MIXING DRUM OF OUR TRUCK MIXERS IS MADE OF WEAR-RESISTANT STEELS:

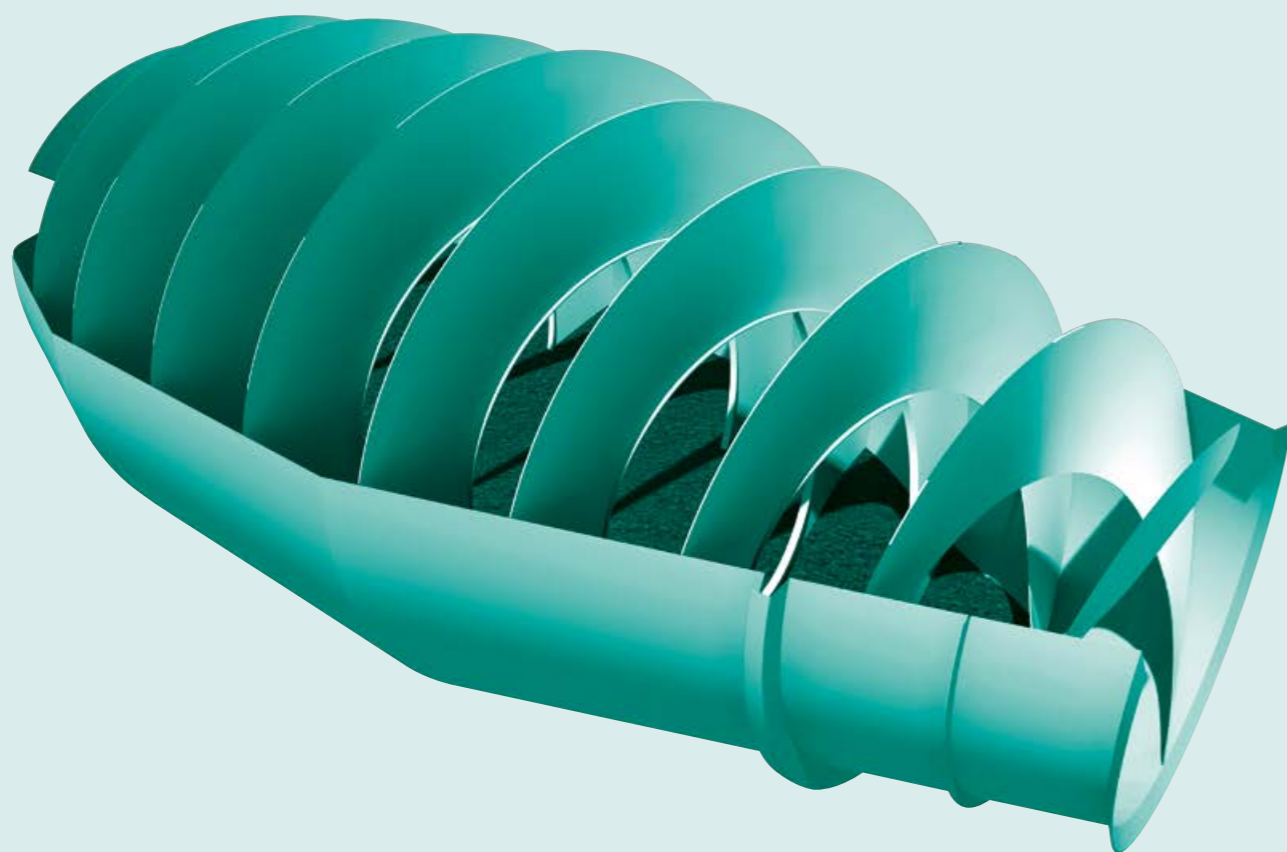
the **30MnB5** steel is used for standard series and the **IMER WEAR** for the superlight series. Both steels have chemical and mechanical characteristics that are absolutely superior to the commonly used ones.

For the **30MnB5**, its content of manganese, chromium and boron guarantees a real resistance to the wear and tear caused by concrete.

For the **IMER WEAR**, its resistance allows to reduce the steel sheet thickness to 3 mm (really lighter), keeping, or better, increasing, drum life.

Type	Thickness (mm)	Rp0,2 (N/mm ²)	Rm (N/mm ²)	Elongation A5 (%)	HB 30/10 (1/2)
IMER WEAR	3	1200	1000÷1450	9÷11	270÷500
30MnB5	4	492	700	23,0	200/220
27MnB5	4	392	615	26,2	179/179
S355J0	5	355	510	30	140/160



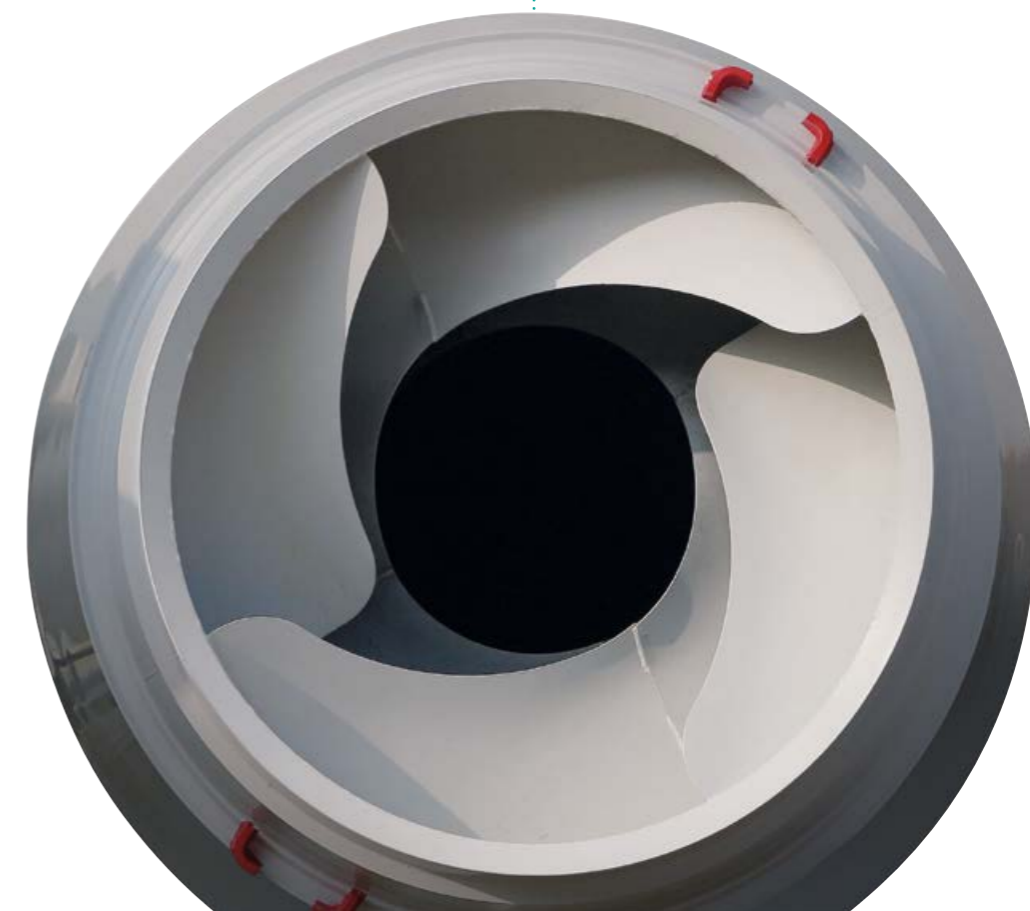


SPECIAL DESIGN

EXCLUSIVE DRUM DESIGNED FOR HIGH QUALITY MIXING PERFORMANCES

The exclusive design of the mixing blades guarantees a mixture homogeneity in all the drum sections, keeping and improving the characteristics of the transported concrete.

IMER GROUP Truck Mixers meet the norms *DIN 1045 - DIN 459* concerning the dry mixing capacity.



IMERVIEW
CONTROL. ANALYSE. PERFORM.

ONE SOFTWARE,
INFINITE SOLUTIONS.

IMER Group has developed **IMERVIEW** with the aim of making it possible to control various aspects of the machines remotely, with a view to provide a modernised service that is close to the customer.

IMERVIEW is a kit which can be combined with the machines of the **ACCESS, EQUIPMENT** and **CONCRETE** Divisions.

Each fleet owner, small independent driver or individual operator of a concrete mixer truck is able to view in their main **dashboard**, which refers to their own fleet or to a single machine, a display of the essential work parameters and the state of the machine.

Each **individual machine** also has its own **specific dashboard**, which enables the user to view **information** and **data** coming from the device through a clear and user-friendly interface.

The user **can monitor** various parameters of the machine, **average transit speed**, drum **rotation** speed, hours of **use** and operation of the machine, **consumption**, **geolocation-tracking** and various indications coming from the machine's on-board **sensors**, including the status of the consumable fluids (oil, fuel, water, additives, etc., of both the truck and the concrete mixer). The user can also obtain a report with **graphs** enabling the **analysis** of specific parameter trends, detected by the concrete mixer control unit or by the truck.

Moreover, it is possible to set various parameters for the management and use of the machine (i.e. SLUMP warning, assisted SLUMP variation, anti-segregation function, etc.).

A reporting **function** at the service of **administrative** documentation completes the functions of this powerful and innovative system.

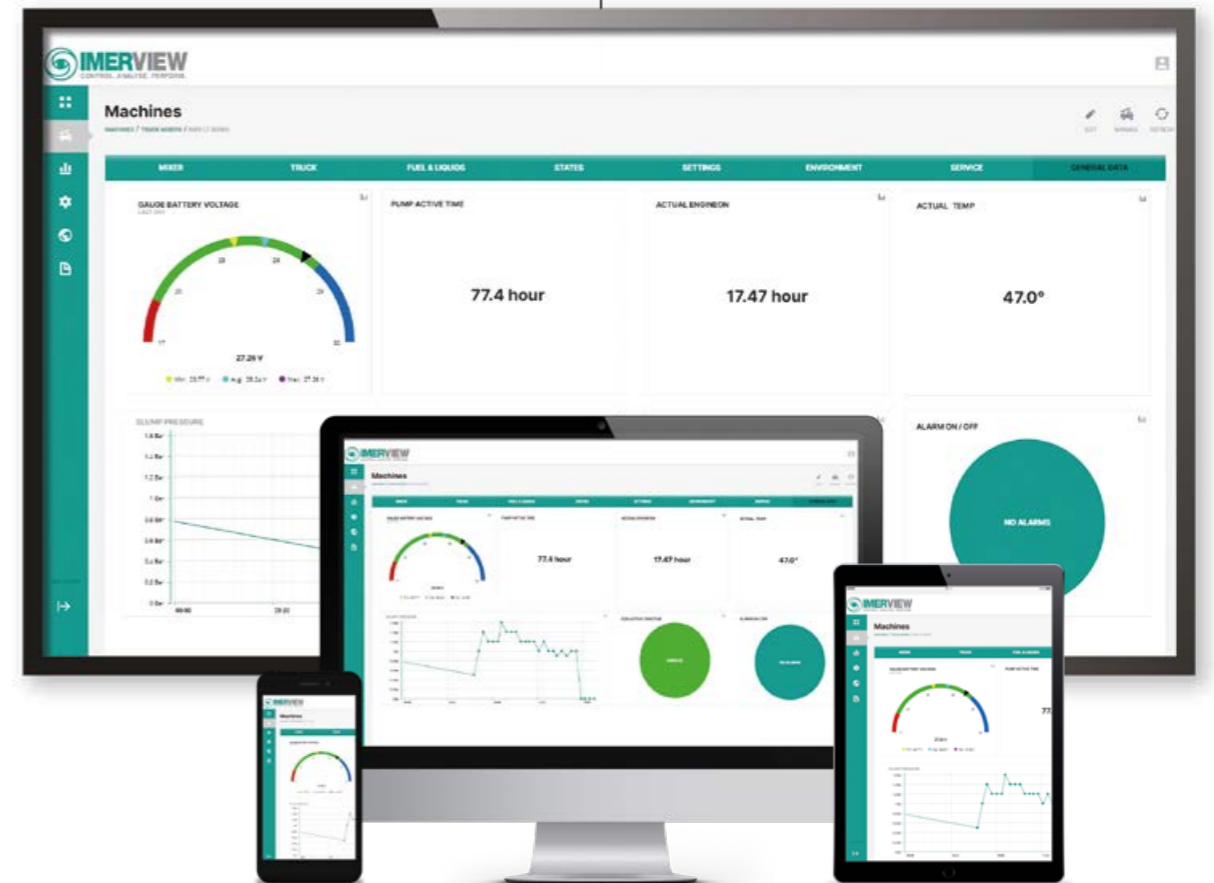
By virtue of its compatibility with the standard **FMS** (Fleet Management System), **IMERVIEW**, combined with our exclusive **CSD** (Constant Speed Drive) system, can be installed on all concrete mixer trucks, both new and used (**retrofit action***). This enables the total management of all available parameters of the truck and the concrete mixer. Furthermore, our software enables a constant dialogue between the concrete mixer, truck, concrete mixing plant, operations centre and potentially all connected devices (IoT).

*Not all functionalities can be guaranteed with retrofit action.



ADVANTAGES AND FUNCTIONALITIES OF THE SYSTEM

- SIMULTANEOUS REMOTE CONTROL OF THE MACHINES AND FLEET MANAGEMENT
- SETTING UP/CHECKING MACHINE PARAMETERS
- INTERACTION WITH IOT DEVICES AND SYSTEMS
- SCHEDULED MAINTENANCE
- DISPLAY OF MACHINE PARAMETERS/VALUES
- CONCRETE MIXER/TRUCK SYSTEM DIAGNOSTICS



- REPORTS FOR TECHNICAL/ ACCOUNTING SUPPORT
- TRUCK/CENTRAL CONCRETE MIXER IOT INTERACTION
- MACHINE GEOLOCATION AND TRACKING
- GEOFENCING DELIMITATION OF MACHINE WORK AREA

THE WIDEST RANGE ON THE MARKET, GREAT PERFORMANCES AND TOTAL COMPLIANCE WITH REGULATIONS

TRUCK MIXERS

The IMER GROUP Truck Mixers are a real system for concrete mixing and transport according to high quality and functional standards. Each technical detail has been conceived, designed and realized in order to make the mixers work in perfect harmony with the truck chassis destined for their transport. A wide range of capacities from 3 to 15 m³ of vibrated concrete always guarantees low tares and optimised carrying capacities.

Our Truck Mixers are equipped with hydraulic transmissions and gearboxes that allow to reach the maximum rotation speed of the mixing drum optimizing the number of revolution/l' of the truck engine. Such a characteristic allows to lower the fuel consumption, reduce the wear of the machine, respect the environment (thanks to the low noise emissions), and to increase the service life of the engine.



OUR TRUCK MIXERS

MAXIMUM EFFICIENCY AND SAFE DRIVING

Our engineering staff is able to design and implement the **best technical solutions to meet the demands of each market**. The close cooperation with all the manufacturers of trucks and the **full respect of their technical requirements**, allows us to ensure the **optimal weights distribution** of on the axles.

FOR EVERY COUNTRY IN THE WORLD

Clockwise rotation is for countries where traffic drives on the right (e.g. Continental Europe, United States, Taiwan, America). **Anticlockwise rotation** is for countries where traffic drives on the left (e.g. United Kingdom, Japan, Australia, Hong Kong, Thailand).

THE WIDEST RANGE ON THE MARKET



Technical Data	Axles	Nominal Capacity	Geometrical Volume	Max Req. Power
		m ³	m ³	kW
LT3.7	4x2	3	7,244	35
LT5.7	6x4	5	8,721	40
LT6.7	6x4	6	10,125	46
LT7.7	6x4	7	12,022	52
LT7.7C	6x4	7	12,022	52
LT8.7	6x4	8	13,116	58
LT8XL.7	8x4	8,5	13,902	58
LT9.7	8x4	9	16,048	70
LT10.7	8x4	10	17,542	77
LT11.7	8x4	10	19,628	77
LT12XL.7	8x4	12	19,931	77
LT14.7	8x4 - 10x4	14	22,800	77
LT15.7	10x4	15	25,560	90

Min. Length (H)	Min. Length (D)	Min. Width (H)	Min. Width (D)	Height	Weight (H)	Weight (D)
mm	mm	mm	mm	mm	Kg	Kg
4500	4510	2300	2300	2302	2650	3050
4990	5258	2300	2300	2436	2900	3350
5249	5549	2300	2300	2533	3100	3600
5872	6072	2300	2300	2665	3350	3850
5853	6053	2300	2500	2581	3350	3850
6135	6739	2300	2500	2735	3550	4050
5135	6739	2300	2500	2735	3650	4150
6558	7285	2500	2500	2733	4200	4700
6901	7628	2500	2500	2793	4400	4900
7365	8146	2500	2500	2805	4800	5400
7487	8265	2500	2500	2827	4900	5500
8548	9145	2500	2500	2856	5200	6000
8903	9503	2500	2500	2893	5600	6300



MECHANICAL GEARBOX TO MEET YOUR NEEDS

It is oversized to meet the high torque demanded by the concrete drum.



WATER METER

It is mounted on the rear part of the truck mixers.



SINGLE CHUTE ARM WITH OPTIMISED BRAKE

The single chute support features better availability for roller greasing and access to the drum rotation lock. The lock lever offers a more ergonomic grip and makes the chute "braking" operation quicker and easier.



DRUM SAFETY LOCK

All the IMER Group truck mixers are provided with a special antirotation mechanical locking device. This mechanism, essential and easy to use, ensures the absolute safety of all maintenance operations inside the mixing drum.



SPECIAL MAN HOLE (OPTION)

Easy and fast opening of the man hole for safe drum maintenance.





LIGHT WEIGHT EXTENSION CHUTES

The standard supply includes two "superlight" polystone extension chutes. Their lightness (only 7 kg) makes them extremely easy to handle, cutting down the risk of accidents to a minimum.

WATER PLANT

All IMER Group truck mixers are provided, in the standard version, with a 650 l steel water tank and mechanical water pump.



SAFETY GRID

For the safe inspection of the charging hopper.

PLATFORM FALL PREVENT AUTOMATIC DOOR (OPTION)

- Ergonomic and Safe
- Appreciated by the Major Groups to decrease risk of personal injuries
- Possibility of easy retrofit on standard and telescopic ladders



FALL-PREVENTION SYSTEM

The new fall-prevention system has been engineered to keep within the machine clearance and to avoid taking the right handoff when going up to the platform. The system is operated directly by the operator when he is on the platform.



CARDAN SHAFT PROTECTION

ERGONOMIC LADDER

The slip proof steps and the larger platform allow a perfect visual of the concrete in safety.





OPTIONAL

IN CAB CONTROLS

For managing the drum from the cabin.

ELECTRIC CONTROL WITH CSD SYSTEM

For a constant speed of rotation of the mixing drum regardless of the speed of the vehicle motor, the IMER Group truck mixers can be fitted with the CSD device integrated in the control panel for the electro-hydraulic controls (option).

TRIGGER TYPE CONTROLS (JOY) AND EMERGENCY STOP



FOLDING EXTENSION CHUTE

Its ergonomics allows a practical and safe use thanks to the anti-trapping and antishear device (available in various materials and lengths).

CLOSING FLAP

The simple and practical closing flap stands out for its cost efficiency in preventing the spills of grouts and concrete residues during the movements of the discharge chute, avoiding pollution to the environment in the vicinity of the casting operation.

CONCRETE SLUMP METER

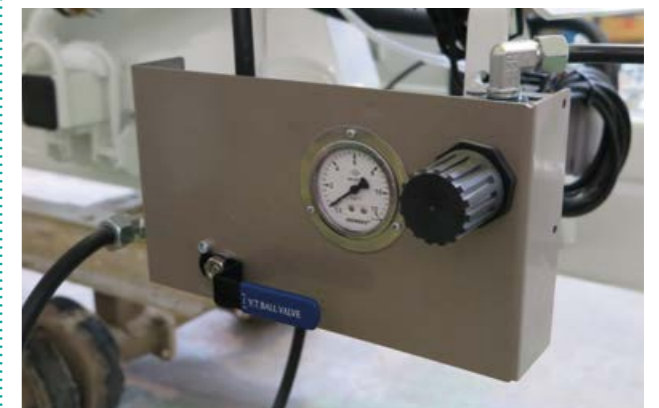
REAR WORKING LIGHT

The rear area of all truck mixers is the most difficult to control. The installation of the rear working light guarantees their perfect visibility in all operating conditions.

TELESCOPIC INSPECTION LADDER



AIR PRESSURE WATER SYSTEM





OPTIONAL

DISCHARGE CHUTE

Hydraulic crank chute support by manual pump.

REAR CAMERA

7" display camera and wiring complies with coming EU safety norms Ensures a better control of manouvering operations. System ready for up to 4 cameras.



SIDE PROTECTION GUARDS

Special "anticatch" barriers ensure safety on the road and in the working site during the usual operations of the truck mixer.

TOOL BOX

"A place for everything, everything in its place". Sometimes wasting time, or even losing tools along the way, can be not only costly but also extremely dangerous.

ADDITIVE TANK

The stainless-steel pressure tank for additives is provided with a pressure-control safety system and a level control for perfect metering. The corrosion-resistant tank is fitted with a large safety cap for fast and easy filling.



REAR BUMPER

The rear bumper (retractable version) is extremely safe, practical to use and very flexible on site.

ECOLOGICAL HYDRAULIC PLUG

The charging of dry material in the batching plant and the following mixing in the drum mixer are a cause of dust spills from the drum: this closing device definitely solves this problem. Adapting the L&T truck mixers to a philosophy of respect for health and the environment is fast and convenient.



HYDRAULIC HALF PLUG

To carry particularly fluid material on rough or steep terrain, it becomes necessary to install the hydraulic half plug to prevent spills of polluting material during the journey or inside the work yard.

ALLUMINIUM MUDGUARDS

The alluminium mudguards are ideal for the superlight version.

LT555 TELESCOPIC CHUTE

The LT 555 telescopic chute is an important accessory designed to increase the versatility of the IMER Group truck mixer. The LT 555 telescopic chute, extending to 4.5 metres in length (5.5 metres with the funnel end), can be ordered by all models. Reliable and safe, with a stainlesssteel construction: it is light, strong and extremely manoeuvrable, both vertically and radially.





SL SUPERLIGHT TRUCK MIXERS

SUPER LIGHTEWEIGHT

Thanks to the adoption of special IMER WEAR steel for the construction of the mixing drum and other expedients.

The high mechanical resistance of the IMER WEAR steel allows to reduce the thickness to 3 mm. We achieved a lightweight and much more wear resistant setup that satisfies the needs of the most exigent customers in terms of:

SUPER PROFITABILITY

Increased concrete transportation, higher economical performance. Super economy: short term investment return.



DISTINCTIVE FEATURES

- *LIGHTWEIGHT EXTENSION CHUTES*
- *ALUMINIUM WATER TANK*
- *ALUMINIUM MUDGUARDS*
- *PLASTIC MUDGUARDS*
- *LIGHTWEIGHT FOLDING EXTENTION CHUTE*

Technical Data	Axles	Nominal Capacity	Geometrical Volume	Max Req. Power	Min. Lenght (H)	Min. Lenght (D)	Min. Width (H)	Min. Width (D)	Height	Weight (H SL)	Weight (D SL)
		m ³	m ³	kW	mm	mm	mm	mm	mm	Kg	Kg
LT3.7 SL	4x2	3	6,748	35	4500	4510	2300	2300	2302		
LT5.7 SL	6x4	5	8,721	40	4990	5258	2300	2300	2436	2486	2936
LT6.7 SL	6x4	6	10,125	46	5349	5549	2300	2300	2533	2648	3148
LT7.7 SL	6x4	7	12,022	52	5872	6072	2300	2300	2665	2855	3355
LT7.7C SL	6x4	7	12,022	52	5853	6053	2300	2500	2581	2855	3355
LT8.7 SL	6x4	8	13,116	58	6135	6739	2300	2500	2735	3032	3532
LT8XL.7 SL	8x4	8,5	13,902	58	5135	6739	2300	2500	2735	3090	3590
LT9.7 SL	8x4	9	16,048	70	6558	7285	2500	2500	2733	3599	4099
LT10.7 SL	8x4	10	17,452	77	6901	7628	2500	2500	2793	3858	4358
LT12XL.7 SL	8x4	12	19,931	77	7487	8265	2500	2500	2827	4050	4650
LT14.7 SL	10x5	14	22,800	77	8548	9145	2500	2500	2856	4444	5244



ARTIC SEMI-TRAILER MIXERS

These special truck mixers are employed in large building sites and are able to transport up to 15 m³ of concrete. Semitrailers are extremely flexible equipment so the truck is immediately free and can be used for other

operations. This mixer is absolutely independent from the truck and its stock of concrete ready to be used on site. It is available with 2 or 3 axles depending on the local regulations or the number of the axles of the truck.



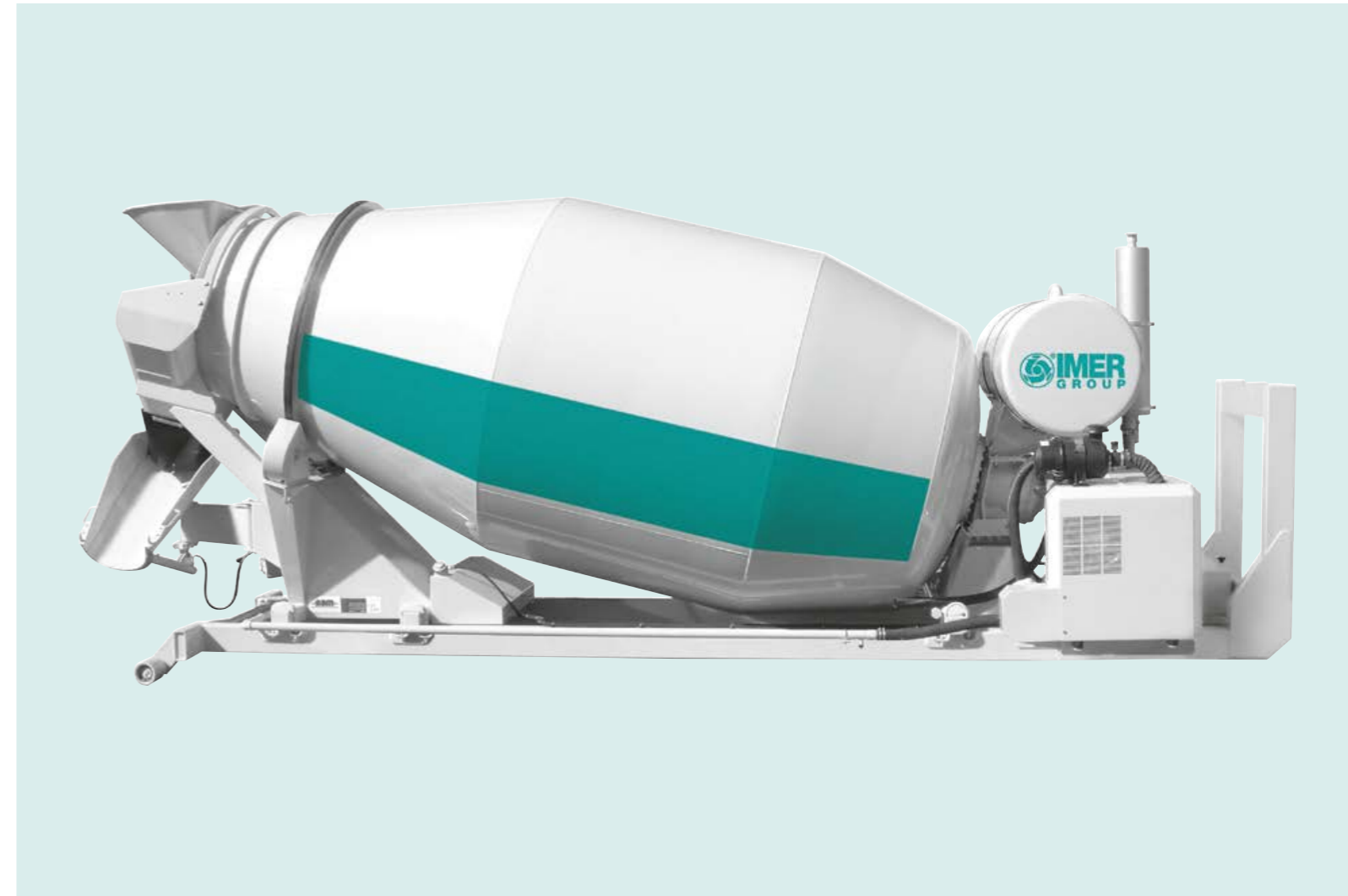
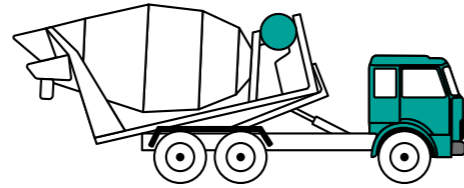
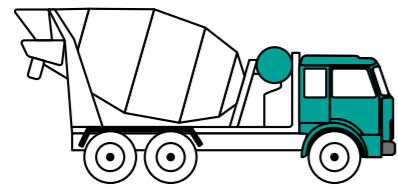
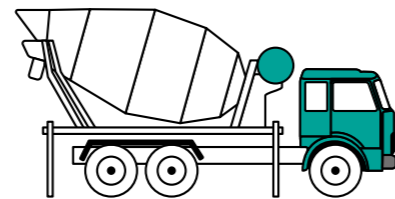
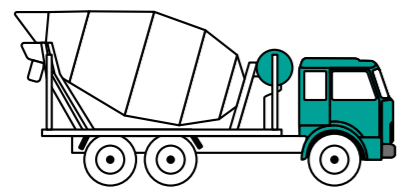
MULTIPURPOSE SYSTEMS

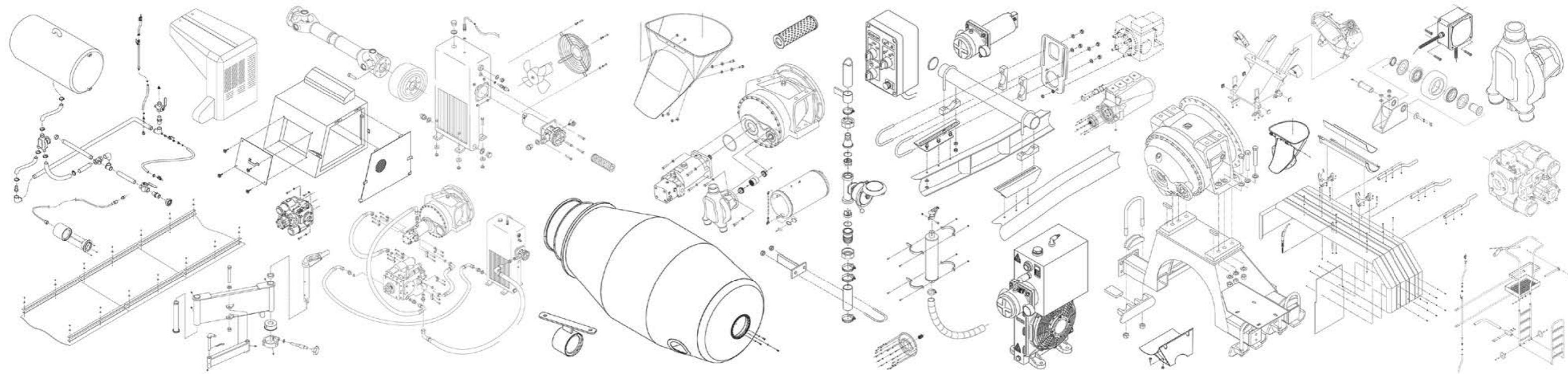
L&T DETACHABLES TRUCK MIXERS

L&T truck mixer range also includes the detachables truck mixers. They are offered in two versions for the two categories of vehicles:

those equipped with manual anchoring system and those with remote control anchoring system (as shown in the pictures).

HOOK LIFT AND INTERCHANGEABLE SYSTEM READY





SPARE PARTS SERVICE



Our constant commitment to guaranteeing the best possible level of assistance extends not only to optimising the production processes but also to our after-sales service.

The large amount of components in stock, the use of interactive multimedia tools to track and re-order them quickly, and the network of authorised assistance centres enable the rapid delivery of spare parts anywhere in the world.



*Concept & design: Emporio ADV
Photo: Gabriele De Nardo; Le Officine Riunite - Udine S.p.A. Archive*

© Copyright by Le Officine Riunite - Udine S.p.A. 2022



Le Officine Riunite - Udine S.p.A. | Concrete Division
Via Santa Caterina, 35
33030 Basaldella di Campoformido (Udine) - Italy
Tel. +39 0432 563911 - Fax +39 0432 562131
oru@oru.it | imergroup.com

Le Officine riunite_Udine S.p.A. reserve the right to change the information contained herein without prior notice when they consider it justified. The data and dimensions are therefore not to be considered as binding. The illustrations may include accessories and therefore they could be slightly different from the standard versions of the equipment.